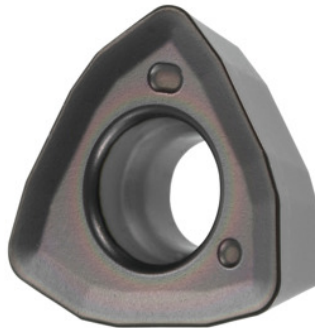


Garant
XDMT120516ZDSR, HB4020, Type: ST900


Order data

Order number	212887 ST900
GTIN	4045197943170
Item class	21A

Description

Note:

 Standard application values for $a_e = 0.5...1 \times D / a_{p\max}$

 Programming radius at $a_{p\max}$: 3 mm

 Feed f_z per tooth: 1.2 mm

Insert thickness S: 5.56 mm

Technical description

Feed f_z per tooth	1.2 mm
Type	ST900
Corner radius	1,6 mm
Insert thickness S	5.56 mm
ISO code indexable insert	XDMT120516ZDSR
Grade	HB4020
Tool material	Carbide

recommended cutting depth $a_{p\max}$	1.5 mm
maximum cutting depth $a_{p\max}$	2 mm
Programming radius at $a_{p\max}$	3 mm
Number of changes/inserts	3
Type of product	Indexable insert for milling

User data

	Suitability	V_c	ISO code
Steel < 500 N/mm ²	suitable	330 m/min	P
Steel < 750 N/mm ²	suitable	280 m/min	P
Steel < 900 N/mm ²	suitable	240 m/min	P
wet maximum	suitable only under restricted conditions		
wet minimum	suitable only under restricted conditions		
dry	suitable		
Air	suitable		