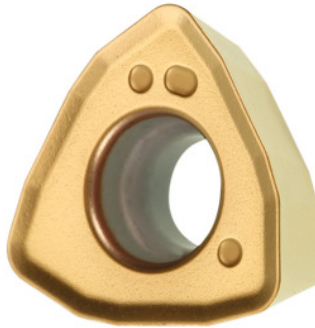


**Garant**
**XDMT120516ZDER, HB4430, Type: TI**


## Order data

Order number	212895 TI
GTIN	4045197943217
Item class	21A

## Description

**Note:**

 Standard application values for  $a_e = 0.5...1 \times D / a_{p\max}$ 

 Programming radius at  $a_{p\max}$ : 3 mm

 Feed  $f_z$  per tooth: 0.8 mm

Insert thickness S: 5.56 mm

## Technical description

Feed $f_z$ per tooth	0.8 mm
Type	Ti
Corner radius	1,6 mm
Insert thickness S	5.56 mm
ISO code indexable insert	XDMT120516ZDER
Grade	HB4430
Tool material	Carbide

recommended cutting depth $a_{p\max}$	0.9 mm
maximum cutting depth $a_{p\max}$	2 mm
Programming radius at $a_{p\max}$	3 mm
Number of changes/inserts	3
Type of product	Indexable insert for milling

### User data

	Suitability	$V_c$	ISO code
INOX < 900 N/mm <sup>2</sup>	suitable only under restricted conditions	180 m/min	M
INOX > 900 N/mm <sup>2</sup>	suitable only under restricted conditions	160 m/min	M
Ti > 850 N/mm <sup>2</sup>	suitable	50 m/min	S
wet maximum	suitable		