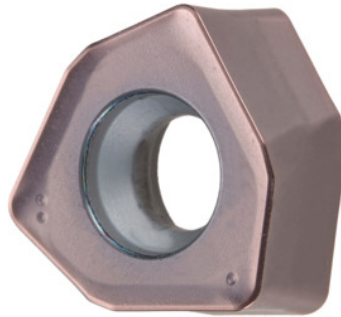


**Garant**
**XOMU146715ZZER, HB4715, Type: HART**


## Order data

Order number	213042 HART
GTIN	4062406267131
Item class	21A

## Description

### Version:

**Innovative** indexable insert concept with **double-sided** indexable inserts with 3 cutting edges (2×3 cutting edges). **High-performance** tool material for particularly high **cost-effectiveness**.

### Note:

Standard application values for  $a_e = 0.5...1 \times D / a_{p,max}$

Programming radius at  $a_{p,max}$ : 3 mm

Feed  $f_z$  per tooth: 0.9 mm

## Technical description

Corner radius	1,5 mm
Type	HART
Feed $f_z$ per tooth	0.9 mm
ISO code indexable insert	XOMU146715ZZER
Grade	HB4715
Tool material	Carbide

recommended cutting depth $a_{p\ max}$	0.8 mm
maximum cutting depth $a_{p\ max}$	3 mm
Programming radius at $a_{p\ max}$	3 mm
Number of changes/inserts	6
Coating	AlTiN
Type of product	Indexable insert for milling

### User data

	Suitability	$V_c$	ISO code
Steel < 50 HRC	suitable	110 m/min	H
Steel < 55 HRC	suitable	80 m/min	H
Steel < 60 HRC	suitable	50 m/min	H
GG(G)	suitable only under restricted conditions	200 m/min	K
dry	suitable		
Air	suitable		