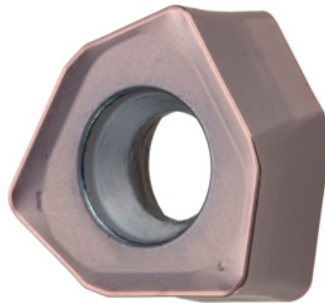


Garant
XOMU146715ZZER, HB415, Type: UNI


Order data

Order number	213050 UNI
GTIN	4062406267162
Item class	21A

Description

Version:

Innovative indexable insert concept with **double-sided** indexable inserts with 3 cutting edges (2×3 cutting edges). **High-performance** tool material for particularly high **cost-effectiveness**.

Note:

Standard application values for $a_e = 0.5...1 \times D / a_{p\max}$

Programming radius at $a_{p\max}$: 3 mm

Technical description

Type	UNI
Corner radius	1,5 mm
ISO code indexable insert	XOMU146715ZZER
Grade	HB415
Tool material	Carbide
recommended cutting depth $a_{p\max}$	1.3 mm
maximum cutting depth $a_{p\max}$	3 mm

Programming radius at $a_{p\max}$	3 mm
Number of changes/inserts	3
Coating	AlTiN
Type of product	Indexable insert for milling

User data

	Suitability	V_c	ISO code
Steel < 500 N/mm ²	suitable	280 m/min	P
Steel < 750 N/mm ²	suitable	260 m/min	P
Steel < 900 N/mm ²	suitable	220 m/min	P
Steel < 1100 N/mm ²	suitable	200 m/min	P
Steel < 1400 N/mm ²	suitable	180 m/min	P
INOX < 900 N/mm ²	suitable	150 m/min	M
INOX > 900 N/mm ²	suitable	130 m/min	M
Uni	suitable		
wet maximum	suitable only under restricted conditions		
wet minimum	suitable only under restricted conditions		
dry	suitable		
Air	suitable		