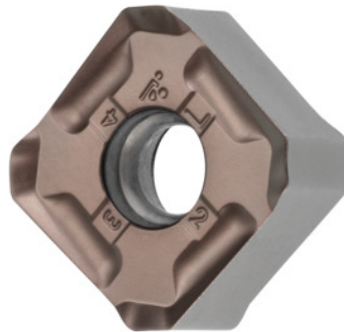


Garant
SNMU 14T7 ANER, HB7520, Type: ST900

Order data

Order number	213446 ST900
GTIN	4045197605979
Item class	21A

Description
Version:

Double-sided with 2x4 cutting edges.

Recommendation:

For the best surface quality choose insert tolerance E in combination with wiper edge insert(s).

Note:

Standard application values for $a_e = 0.5 \dots 1 \times D / a_{p \max}$

maximum cutting depth $a_{p \max}$: 6 mm

Feed f_z per tooth: 0.3 mm

Technical description

Feed f_z per tooth	0.3 mm
Type	ST900
ISO code indexable insert	SNMU 14T7 ANER
Grade	HB7520
Tool material	Carbide

maximum cutting depth $a_{p\max}$	6 mm
Number of changes/inserts	8
Type of product	Indexable insert for milling

User data

	Suitability	V_c	ISO code
Steel < 500 N/mm ²	suitable	300 m/min	P
Steel < 750 N/mm ²	suitable	280 m/min	P
Steel < 900 N/mm ²	suitable	260 m/min	P
wet maximum	suitable only under restricted conditions		
dry	suitable		