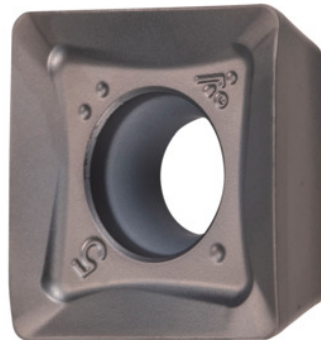


Garant
SOMT 120508 PDER, CU7530, Type: ST500

Order data

Order number	214864 ST500
GTIN	4045197610652
Item class	21A

Description
Version:

Increased insert thickness for the highest metal removal rates. Protected against wear by the latest coating.

Cermet.

Note:

Standard application values for $a_e = 0.3 \times D$.

Corner radius: 0.8 mm

Feed f_z per tooth: 0.2 mm

Technical description

Feed f_z per tooth	0.2 mm
Type	ST500
Corner radius	0.8 mm
ISO code indexable insert	SOMT 120508 PDER
Grade	CU7530

Tool material	Cermet
Number of changes/inserts	4
Type of product	Indexable insert for milling

User data

	Suitability	V_c	ISO code
Steel < 500 N/mm ²	suitable	270 m/min	P
Steel < 750 N/mm ²	suitable	260 m/min	P
Steel < 900 N/mm ²	suitable	210 m/min	P
INOX < 900 N/mm ²	suitable	100 m/min	M
wet maximum	suitable only under restricted conditions		
dry	suitable		