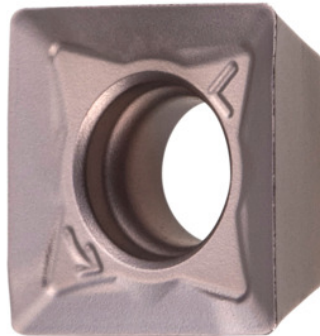


Garant**SOMT 083604 PDER, HB7520, Type: ST900****Order data**

Order number	214918 ST900
GTIN	4045197674708
Item class	21A

Description**Version:**

Increased insert thickness permits markedly deep trough geometry for positive cutting action, and minimises the susceptibility to fracture.

Note:

Standard application values for $a_e = 0.3 \times D$.

Corner radius: 0.4 mm

Feed f_z per tooth: 0.15 mm

Technical description

Feed f_z per tooth	0.15 mm
Type	ST900
Corner radius	0.4 mm
ISO code indexable insert	SOMT 083604 PDER
Grade	HB7520
Tool material	Carbide

Number of changes/inserts	4
Type of product	Indexable insert for milling

User data

	Suitability	V_c	ISO code
Steel < 500 N/mm ²	suitable	320 m/min	P
Steel < 750 N/mm ²	suitable	250 m/min	P
Steel < 900 N/mm ²	suitable	210 m/min	P
wet maximum	suitable only under restricted conditions		
dry	suitable		