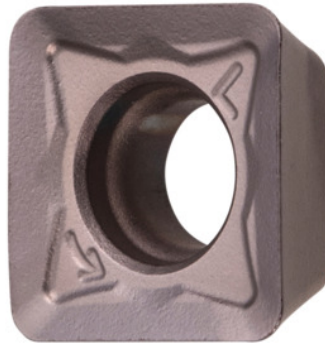


**Garant****SOMT 083608 PDER, HB7630, Type: INOX****Order data**

Order number	214933 INOX
GTIN	4045197706645
Item class	21A

**Description****Version:**

Increased insert thickness permits markedly deep trough geometry for positive cutting action, and minimises the susceptibility to fracture.

**Note:**

Standard application values for  $a_e = 0.3 \times D$ .

Corner radius: 0.8 mm

Feed  $f_z$  per tooth: 0.15 mm

**Technical description**

Feed $f_z$ per tooth	0.15 mm
Type	Steel
Corner radius	0.8 mm
ISO code indexable insert	SOMT 083608 PDER
Grade	HB7630
Tool material	Carbide

Number of changes/inserts	4
Type of product	Indexable insert for milling

**User data**

	<b>Suitability</b>	<b>V<sub>c</sub></b>	<b>ISO code</b>
INOX < 900 N/mm <sup>2</sup>	suitable	150 m/min	M
INOX > 900 N/mm <sup>2</sup>	suitable	120 m/min	M
wet maximum	suitable only under restricted conditions		
dry	suitable		