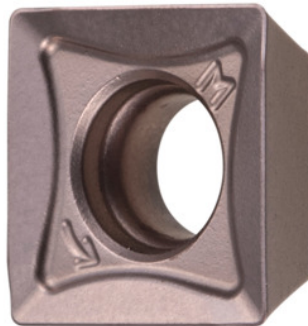


**Garant**
**SOMT 083604 PDER, HB7730, Type: GGG**


## Order data

Order number	214948 GGG
GTIN	4045197706652
Item class	21A

## Description

### Version:

Increased insert thickness permits markedly deep trough geometry for positive cutting action, and minimises the susceptibility to fracture.

### Note:

Standard application values for  $a_e = 0.3 \times D$ .

Corner radius: 0.8 mm

Feed  $f_z$  per tooth: 0.15 mm

## Technical description

Feed $f_z$ per tooth	0.15 mm
Type	GGG
Corner radius	0.8 mm
ISO code indexable insert	SOMT 083604 PDER
Grade	HB7730
Tool material	Carbide

Number of changes/inserts	4
Type of product	Indexable insert for milling

**User data**

	<b>Suitability</b>	<b>V<sub>c</sub></b>	<b>ISO code</b>
GG(G)	suitable	200 m/min	K
wet maximum	suitable only under restricted conditions		
dry	suitable		