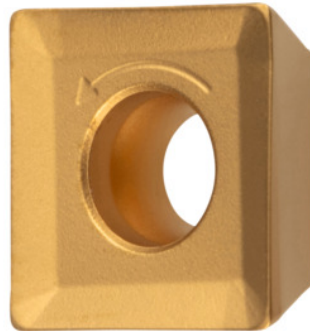


Garant
SOMT 09T304 TR, HB7525, Type: ST900


Order data

Order number	215068 ST900
GTIN	4045197454997
Item class	21A

Description

Version:

Extremely **strong inserts** to the standard ISO dimensions, precision sintered and ground. High strength and wear resistance due to micro-grain structure.

Note:

Standard application values for $a_e = 0.3 \times D$ / $a_{p \max} = 5$ mm.

Corner radius: 0.4 mm

Feed f_z per tooth: 0.14 mm

Technical description

Feed f_z per tooth	0.14 mm
Type	ST900
Corner radius	0.4 mm
ISO code indexable insert	SOMT 09T304 TR
Grade	HB7525
Tool material	Carbide

Number of changes/inserts	4
Type of product	Indexable insert for milling

User data

	Suitability	V _c	ISO code
Steel < 500 N/mm ²	suitable	250 m/min	P
Steel < 750 N/mm ²	suitable	180 m/min	P
Steel < 900 N/mm ²	suitable	170 m/min	P
Steel < 1100 N/mm ²	suitable only under restricted conditions	110 m/min	P
INOX < 900 N/mm ²	suitable only under restricted conditions	120 m/min	M
INOX > 900 N/mm ²	suitable only under restricted conditions	100 m/min	M
wet maximum	suitable only under restricted conditions		
dry	suitable		