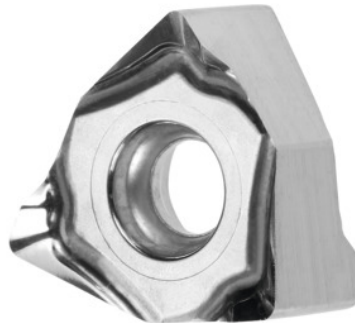



XNEX 080608, HUM310, Type: ALU

Order data

Order number	215104 ALU
GTIN	4062406103071
Item class	22A

Description
Version:

6 edges ensure good value for money, due to a low price per cutting edge.
Double-sided 2x3-edge carbide indexable insert for **shoulder milling operations**.

Note:

Standard application values for $a_e = 0.3 \times D$ / $a_p = 3$ mm.
maximum cutting depth $a_{p,max}$: 4 mm
Feed f_z per tooth: 0.15 mm

Technical description

Type	ALU
Feed f_z per tooth	0.15 mm
Corner radius	0,8 mm
ISO code indexable insert	XNEX 080608
Grade	HUM310
Tool material	Carbide

maximum cutting depth $a_{p\max}$	4 mm
Number of changes/inserts	6
Type of product	Indexable insert for milling

User data

	Suitability	V_c	ISO code
Alu plastics	suitable	1100 m/min	N
Aluminium (short chipping)	suitable	1100 m/min	N
Alu > 10% Si	suitable	900 m/min	N
wet maximum	suitable only under restricted conditions		
wet minimum	suitable only under restricted conditions		
dry	suitable		
Air	suitable		