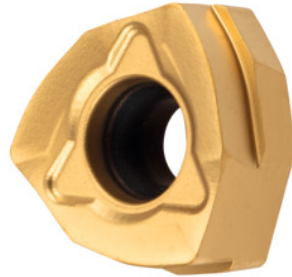




XNEX 080610 High feed rate, HBM20, Type: UNI



Order data

Order number	215117 UNI
GTIN	4062406103217
Item class	22A

Description

Version:

6 edges ensure good value for money, due to a low price per cutting edge.
 Single-sided 3-edge carbide indexable insert with special **geometry for high feed rates**.
 Programming radius at $a_{p,max}$ of 2.4 mm.

Note:

Standard application values for $a_e = 0.3 \times D$ / $a_p = 3$ mm.

$a_e = 0.6 \times D$ / $a_p = 0.8$ mm.

maximum cutting depth $a_{p,max}$: 1 mm

Insert thickness S: 6.35 mm

Technical description

Type	UNI
Corner radius	1 mm
Insert thickness S	6.35 mm
ISO code indexable insert	XNEX 080610
Grade	HBM20

Tool material	Carbide
maximum cutting depth $a_{p\max}$	1 mm
Number of changes/inserts	6
Coating	CVD
Type of product	Indexable insert for milling

User data

	Suitability	V_c	ISO code
Steel < 500 N/mm ²	suitable	280 m/min	P
Steel < 750 N/mm ²	suitable	240 m/min	P
Steel < 900 N/mm ²	suitable	220 m/min	P
Steel < 1100 N/mm ²	suitable	200 m/min	P
Steel < 1400 N/mm ²	suitable	180 m/min	P
INOX < 900 N/mm ²	suitable	120 m/min	M
INOX > 900 N/mm ²	suitable	95 m/min	M
Uni	suitable		
wet maximum	suitable only under restricted conditions		
wet minimum	suitable only under restricted conditions		
dry	suitable		
Air	suitable		