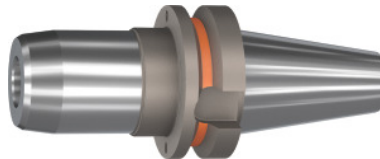


Garant
BASIC hydraulic chuck short, slim, Form ADB, BT 40, Clamping range \varnothing D1: 16mm

Order data

Order number	303473 16
GTIN	4062406531096
Item class	31A

Description
Version:

- Radial run-out $\leq 3 \mu\text{m}$.
- Balluffchip bore.
- Axial length adjustment possible (adjustment range $V = 10 \text{ mm}$).
- Flexibility thanks to the use of reducing adapters.
- Coolant pressure up to 80 bar.

Application:

For drilling, reaming and finish milling.

Delivery conditions:

Incl. length adjustment screw and hexagon key with T-handle.

Optional extras:

Pull studs (PS) No. 308760 – 308806, reducing sleeves No. 302135 – 302180.

Clamping \varnothing D₁: 16 mm

Overhang dimension A: 90 mm

\varnothing D₂: 38 mm

External \varnothing D: 44.5 mm

L₂: 47.5 mm

Thread M: M12×1

Technical description

\varnothing D ₂	38 mm
External \varnothing D	44.5 mm

Clamping $\varnothing D_1$	16 mm
Overhang dimension A	90 mm
L_2	47.5 mm
Thread M	M12×1
Overhang length L_1 incl. recess	63 mm
Adapter	BT 40
Arbor standard	JIS B6339
Arbor standard	JIS B6339
Shape	ADB
Through-coolant	yes, with max. 80 bar
Balance quality G at rotational speed	G 2.5 at 25,000 rpm
Concentricity	$\leq 3 \mu\text{m}$
Machining strategy	HPC
Balluffchip bore	yes
Type of product	Hydraulic clamping chuck