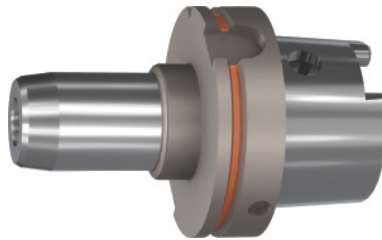


**Garant**
**Hydraulic chuck BASIC short, slim, HSK-A 100, Clamping range  $\varnothing$  D1: 16mm**

**Order data**

|              |               |
|--------------|---------------|
| Order number | 307523 16     |
| GTIN         | 4062406544515 |
| Item class   | 31A           |

**Description**
**Version:**

- Axial length adjustment, adjustment travel 10 mm.
- With Balluffchip bore.

**Application:**

- High metal removal rate (but not for extreme heavy machining).
- For drilling, reaming, and milling.

**Optional extras:**

Reducer sleeves No. 302135 – 302180, coolant tube No. 309880, coolant tube socket wrench No. 309890, parallel wipers No. 343720.

**Note:**

A-dimension = 200 mm available on request!

Overhang dimension A: 100 mm

$\varnothing$  D<sub>2</sub>: 38 mm

External  $\varnothing$  D: 50 mm

L<sub>2</sub>: 53 mm

L<sub>3</sub>: 45 mm

Adjustment travel V: 10 mm

**Technical description**

|                      |        |
|----------------------|--------|
| Thread M             | M12×1  |
| Overhang dimension A | 100 mm |

|                                       |                          |
|---------------------------------------|--------------------------|
| Clamping $\varnothing D_1$            | 16 mm                    |
| $L_3$                                 | 45 mm                    |
| $L_2$                                 | 53 mm                    |
| $\varnothing D_2$                     | 38 mm                    |
| External $\varnothing D$              | 50 mm                    |
| Adjustment travel V                   | 10 mm                    |
| Adapter                               | HSK-A 100                |
| Arbor standard                        | ISO 12164-1              |
| Arbor standard                        | DIN 69882-7              |
| Arbor standard                        | DIN 69893                |
| Shape                                 | A                        |
| Through-coolant                       | yes, with max. 80 bar    |
| Balance quality G at rotational speed | G 2.5 at 25,000 rpm      |
| Concentricity                         | $\leq 3 \mu\text{m}$     |
| Machining strategy                    | HSC                      |
| Balluffchip bore                      | yes                      |
| Type of product                       | Hydraulic clamping chuck |

## Accessories

|   |           |
|---|-----------|
| Cylindrical cleaner Plastic Pin $\varnothing 16$ mm | 343720 16 |
|---|-----------|