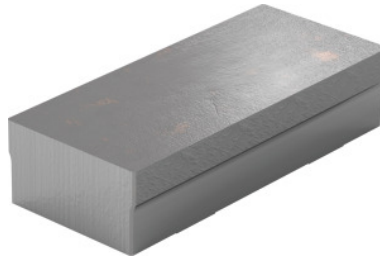


**Garant****Soft top jaw, Type: 120S****Order data**

Order number	363034 120S
GTIN	4062406131739
Item class	310

**Description****Application:**

For realising customised contours and for machining sensitive components.

**Note:**

Dovetail slide available for quick change of jaws. Version S of steel and A of aluminium. Sawn raw material, only machined on underside. Article 363034 80A may be clamped only to max. 12.5 Nm (12.5 Nm = 0.5 t). Article 363034 120A may be clamped only to max. 34 Nm (34 Nm = 1 t). Article 363034 160A may be clamped only to max. 82.5 Nm (82.5 Nm = 2 t).

Material: 1.7227

Material: 1.7227

Jaw width b: 120 mm

Jaw height h: 28 mm

Jaw length l: 50 mm

suitable for colour code: Xtric 80

**Technical description**

Jaw width b	120 mm
suitable for colour code	Xtric 80
Jaw height h	28 mm
Jaw length l	50 mm

Material	1.7227
Type of product	Vice jaws