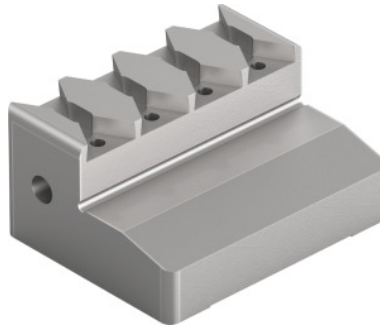


Garant
Top jaw with insert seat, for type: 50

Order data

Order number	363036 50
GTIN	4062406393014
Item class	310

Description
Version:

Jaws for using Gripp inserts 361 163 and without clamping step (individual adjustment of the step height using parallels, Gripp inserts must be ordered separately).

b_1 : 50 mm

Jaw height h : 24 mm

Height h_2 : 8 mm

Jaw length l : 40 mm

Length l_1 : 3 mm

Weight: 0.22 kg

Technical description

Length l_1	3 mm
Jaw length l	40 mm
suitable for colour code	Xtric 50
Height h_2	8 mm
b_1	50 mm

Weight	0.22 kg
Jaw height h	24 mm
Type of product	Vice jaws