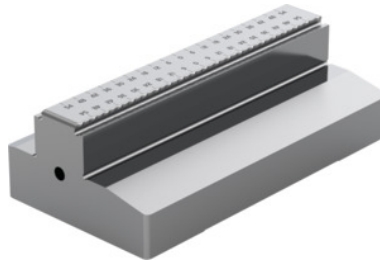


**Garant**
**Top jaw, offset, LANG system, Type: 125**

**Order data**

Order number	363043 125
GTIN	4062406221553
Item class	310

**Description**
**Version:**

Pre-impression of the serrated contour necessary. With 3 mm grip step and smooth clamping face.

**Application:**

To avoid clamping gaps. See clamping capacity overview.

Jaw width b: 125 mm

Jaw height h: 38 mm

Height  $h_2$ : 15 mm

Jaw length l: 66 mm

$l_2$ : 14.5 mm

Length  $l_3$ : 28.5 mm

**Technical description**

Jaw length l	66 mm
suitable for colour code	Xtric 125
Height $h_2$	15 mm
Jaw width b	125 mm
Jaw height h	38 mm

Length $l_3$	28.5 mm
$l_2$	14.5 mm
Type of product	Vice jaws