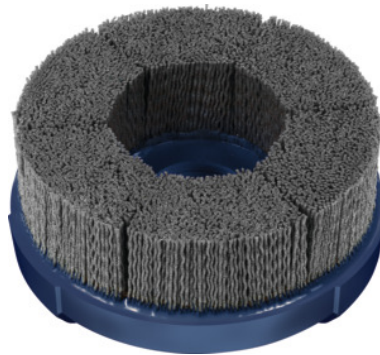


Garant**Disc brush, silicon carbide (SiC), Ø 144 mm, Grit: 120****Order data**

Order number	575018 120
GTIN	4045197892706
Item class	51P

Description**Version:**

With longitudinal groove for clamping on face mill arbors (DIN 6357) and combination face mill adapters (DIN 6358).

Disc brushes with **extremely tightly packed abrasive bristles (right to the edge of the brush)** embedded in the plastic pad. The bristles support each other, giving a **highly stable shape**. Very long working life.

Nylon bristles with very high **silicon carbide grit content** for general-purpose use.

Advantage:

- **Workpiece rework directly after the machining process.**
- **Reproducible results due to constantly exposed grinding grit.**
- **Good process reliability thanks to high shape stability and shape accuracy.**
- **Quick and secure installation without further accessories.**
- **Very low radial run-out.**

Application:

On **CNC machining centres** and when used by **robots**, preferably **wet grinding** with cooling lubricant. Machining of flat components: precise **deburring, edge rounding, finish machining** after milling, **surface finishing** e.g. of sealing and mating faces.

Note:

Special versions available on request.

Grinding medium code: SiC

Bore $\varnothing d_1$: 32 with groove mm

Grit designation: medium

Bristle thickness: 1.1 mm

Technical description

Bristle thickness	1.1 mm
Grit	120
Grit designation	medium
Feed	4500 - 8000 mm/min
Infeed	0.8 (fine) – 1.5 (coarse) mm
Product name attribute	\varnothing 144 mm
Brush $\varnothing D_1$	144 mm
Disc dia. D_2	150 mm
Grinding media	Silicon carbide (SiC)
Grinding medium code	SiC
Bristle length L_3	43 mm
Working area \varnothing	144 mm
Bore $\varnothing d_1$	32 with groove mm
recommended speed	1000 - 1200 min ⁻¹
maximum speed	2500 min ⁻¹
Type of product	Disc brush

User data

	Suitability	V_c	ISO code
Alu Mg	suitable		
Steel < 900 N/mm ²	suitable		
Steel < 1400 N/mm ²	suitable only under restricted conditions		
Steel < 55 HRC	suitable only under restricted conditions		

Steel < 60 HRC	suitable only under restricted conditions
INOX	suitable only under restricted conditions
Ti	suitable only under restricted conditions
GG(G)	suitable only under restricted conditions
CuZn	suitable
Uni	suitable
wet maximum	suitable
dry	suitable only under restricted conditions

Accessories

Tightening screw with internal cooling for mandrel Ø 32 mm

575096 32